

Public Health Lancashire

Mike Leaf – Director of Health Improvement

Deborah Harkins – Director of Health protection and Policy

Sakthi Karunanithi – Director of Population Healthcare

Public Health Lancashire

- ✓ Where have we been?
- ✓ Update on transition
- ✓ New approaches

Where have we been?

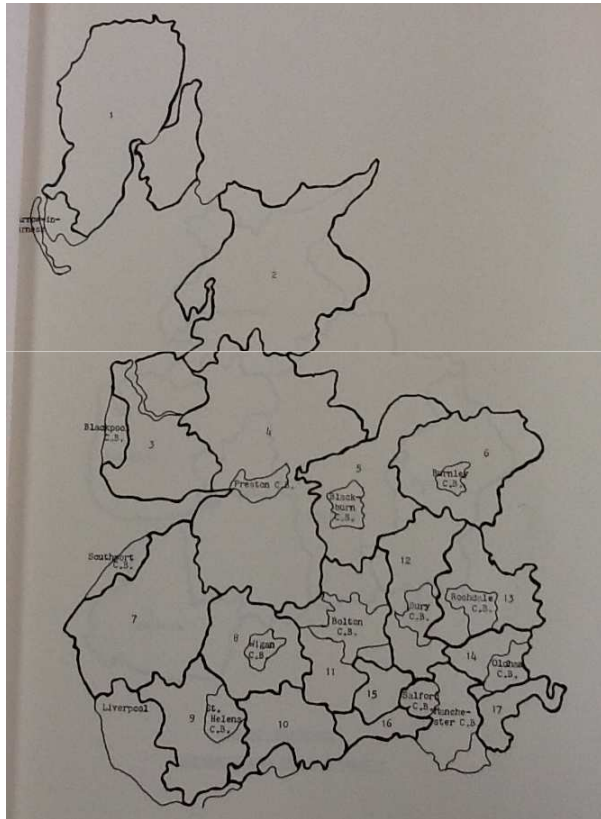


“...my grateful thanks to all the staff...Central and Divisions, who have continued to co-operate in the maintenance and advancement of the various services, whilst undertaking much work involved in the reorganisation”

C.H.T. WADE

County Medical Officer of Health, 1973

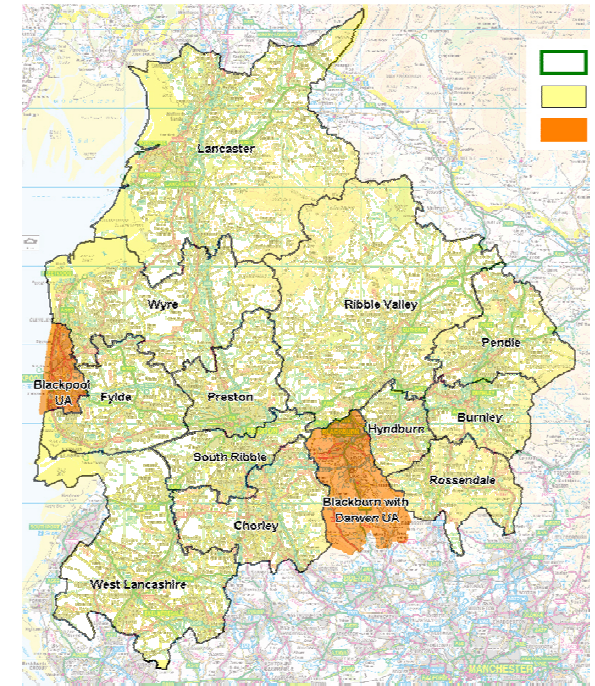
Pre 1974



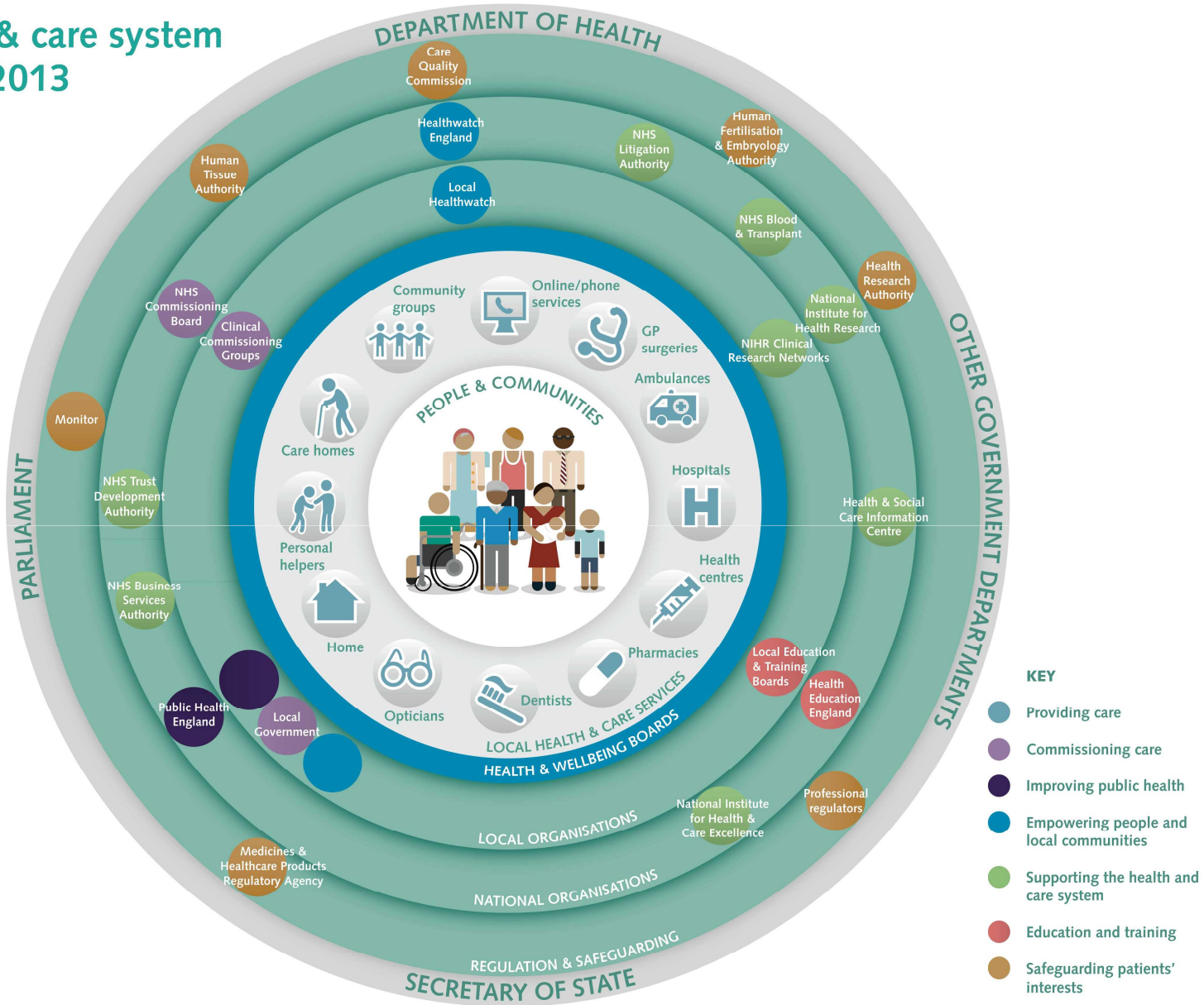
1974



2012



The health & care system from April 2013



Public Health System in Lancashire

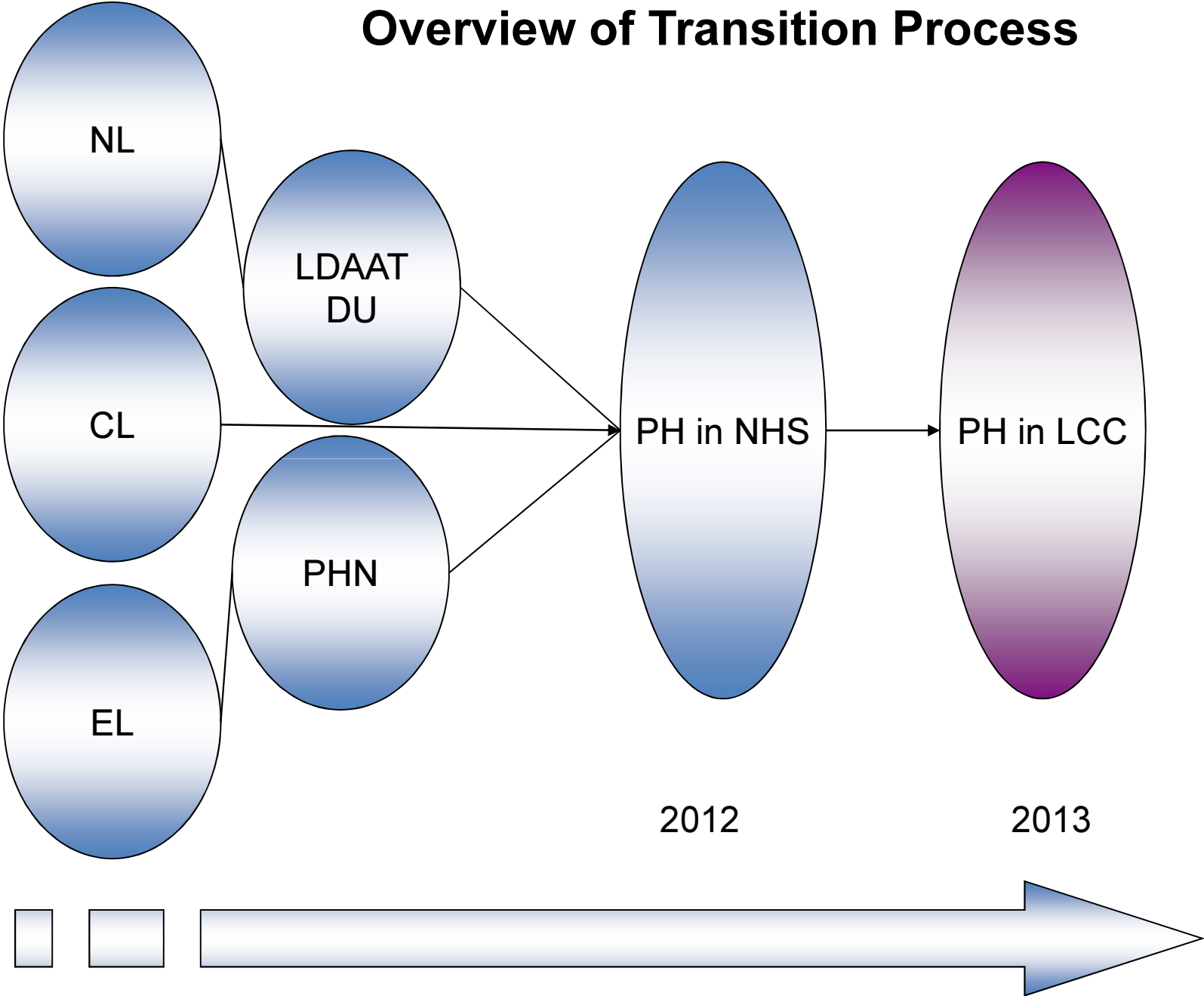
From April 2013

- Public Health teams in:
 - Lancashire County Council
 - Public Health England (Cumbria and Lancashire)
 - NHS Commissioning Board Local Area Team (pan-Lancashire)

Our five main contributions

1. Directly commission public health services
2. Provide public health leadership and support to NHS Commissioners, LCC, Districts, the Third Sector and other partners
3. Be the interface between the Health and Wellbeing Board, the District level partnerships and the rest of the health system
4. Develop new relationships with CCGs, NCB LAT, PHE, CSU and LCC Directorates to improve health and well being outcomes
5. Contribute to develop national policies

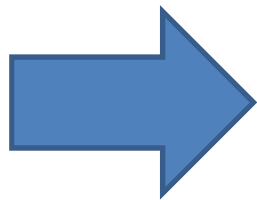
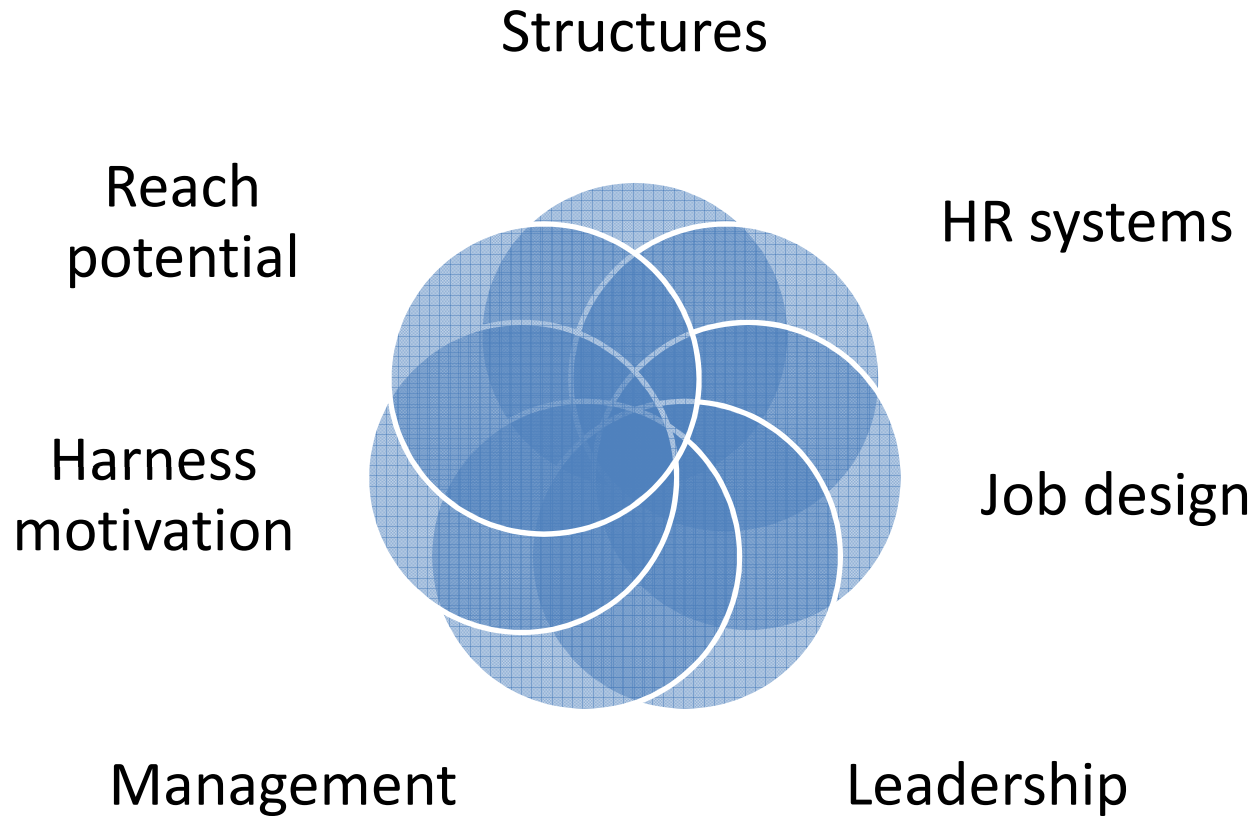
Overview of Transition Process



One Team

Local Health.....
Lancashire Wide

Organisational development approach



sustained organisational performance

One Team: Local Health...Lancashire Wide

County wide functions - Do it once and do it well

- County-wide support services
- System wide workforce and organisational development for Public Health
- Enable consistent, co-ordinated, systematic approach to:
 - working with partners
 - Influencing national policy
- Provide critical mass
- Support delivery of public health in localities

One Team: Local Health...Lancashire Wide

County wide functions

- Intelligence and knowledge management
- Health protection
- Business management, planning and governance
- Influencing county based wider determinants of health
- Commissioning of health improvement and wellbeing services
- Clinical leadership and governance
- Performance management and improvement
- Locality development
- Liaison with LCC Cabinet/ Executive and other LCC directorates
- Workforce development and training
- Communication and marketing

One Team: Local Health...Lancashire Wide

Localities

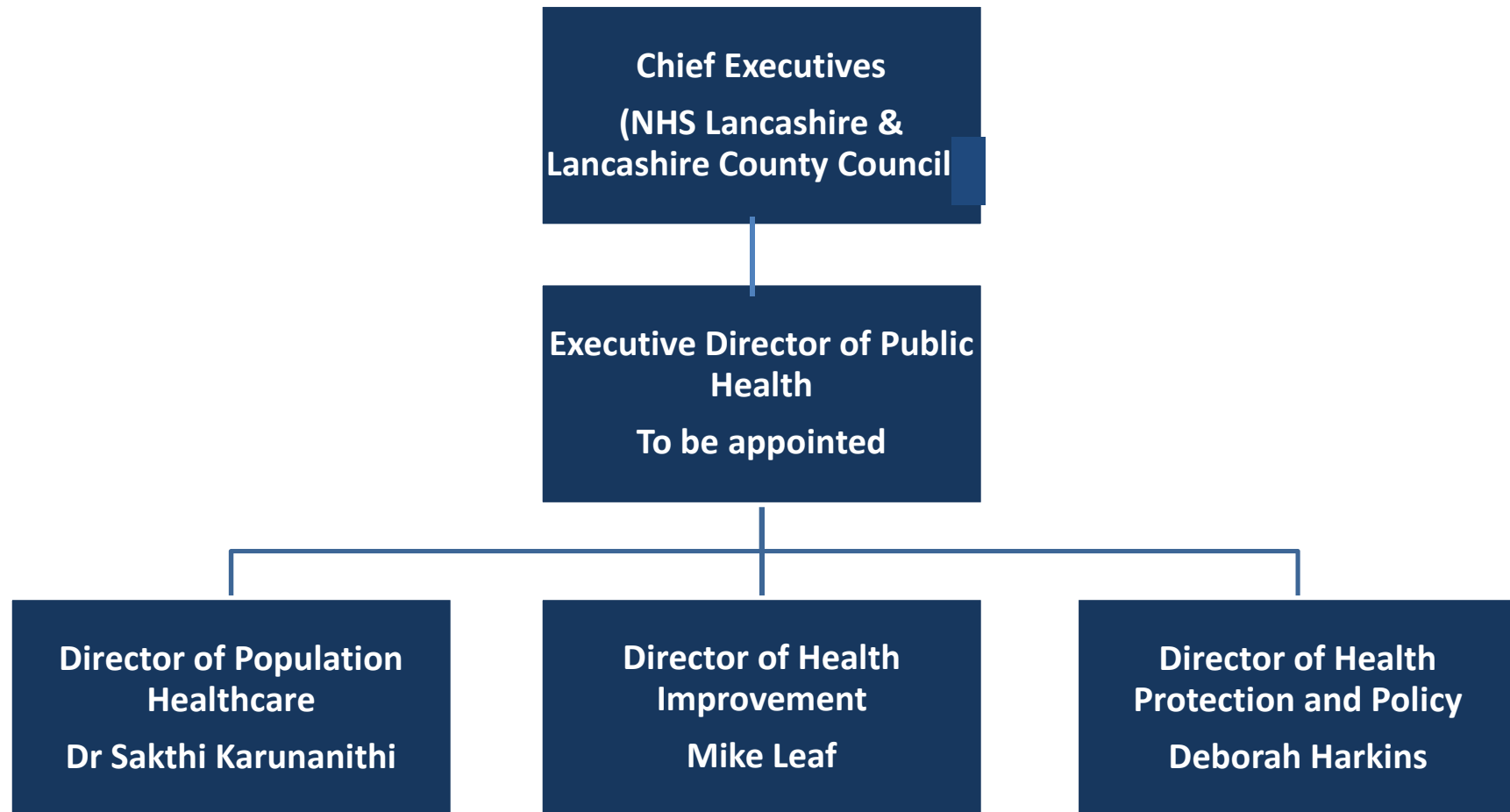
- Public Health leadership and support to CCGs, district level partnerships and district councils
- Multi-disciplinary teams reflecting the three domains of public health (matrix working)
 - Supported by locality staff taking on county-wide areas of responsibility
- Reflecting health economies
- Align with LCC locality footprints

One Team: Local Health...Lancashire Wide

Matrix Working across themes

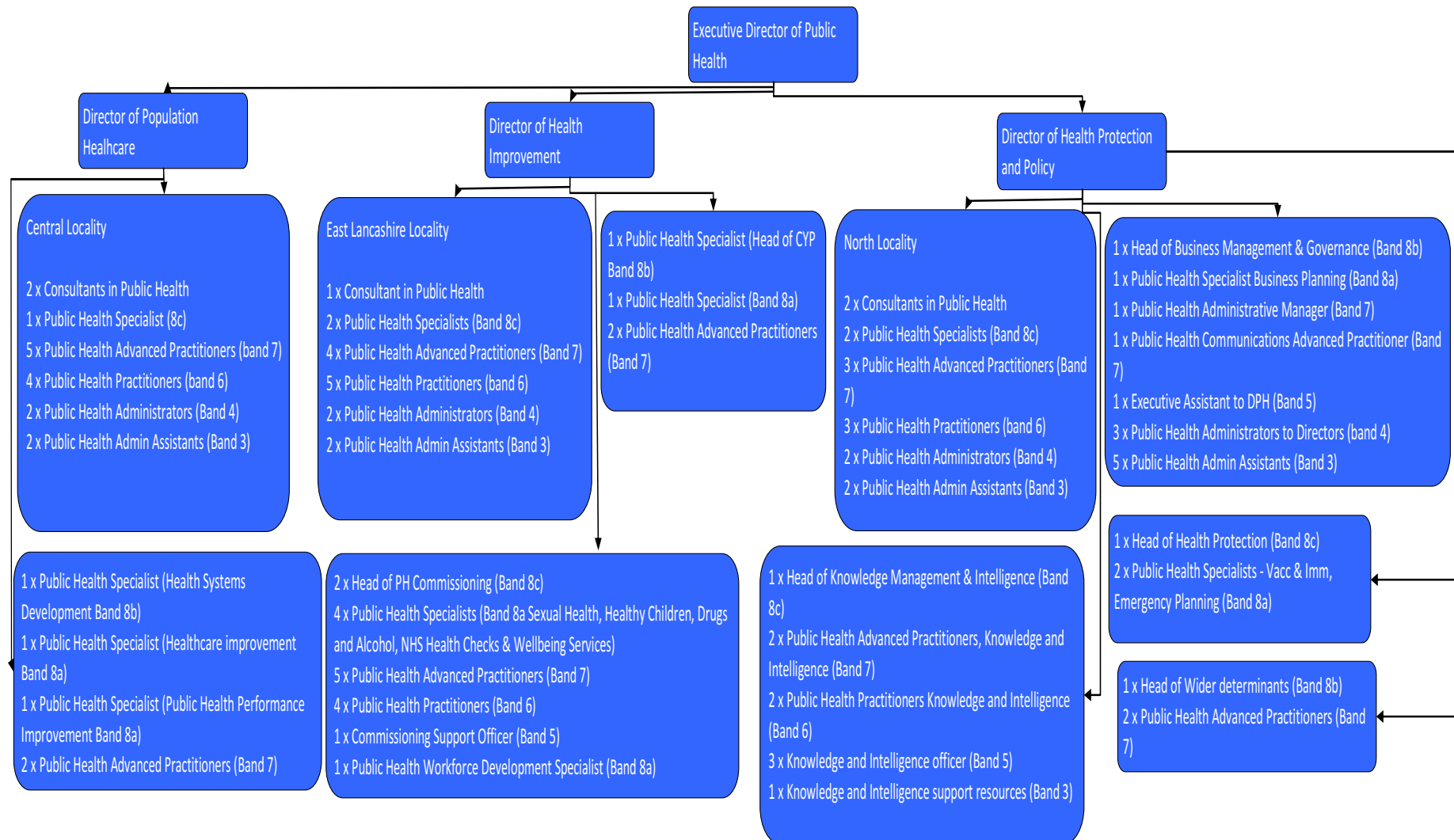
- NCMP and childhood obesity
- Healthy Child Programme
- School nursing
- Infant feeding
- Infant mortality
- Sexual health
- Individual Funding Requests
- Interventions of Limited Clinical Value
- long term conditions, cancers, circulatory disease,
- Health Checks
- Healthy Lifestyles
- Tobacco control and stop smoking services
- Alcohol and substance misuse
- Healthy Settings
- Accidental injuries
- Seasonal mortality reduction
- Mental health
- Children and young people's healthcare, older people's healthcare

Organisational Structure (October 2012)



One Team: Local Health...Lancashire Wide

Draft Organisational Structure



New Approaches

- Use of assets
- Integrated commissioning
- Generic skills with matrix working on public health priorities
- Greater focus on wider determinants, delivering improved outcomes and reducing inequalities
- Aligned with the shifts envisaged in the Health and Wellbeing strategy

Thank You