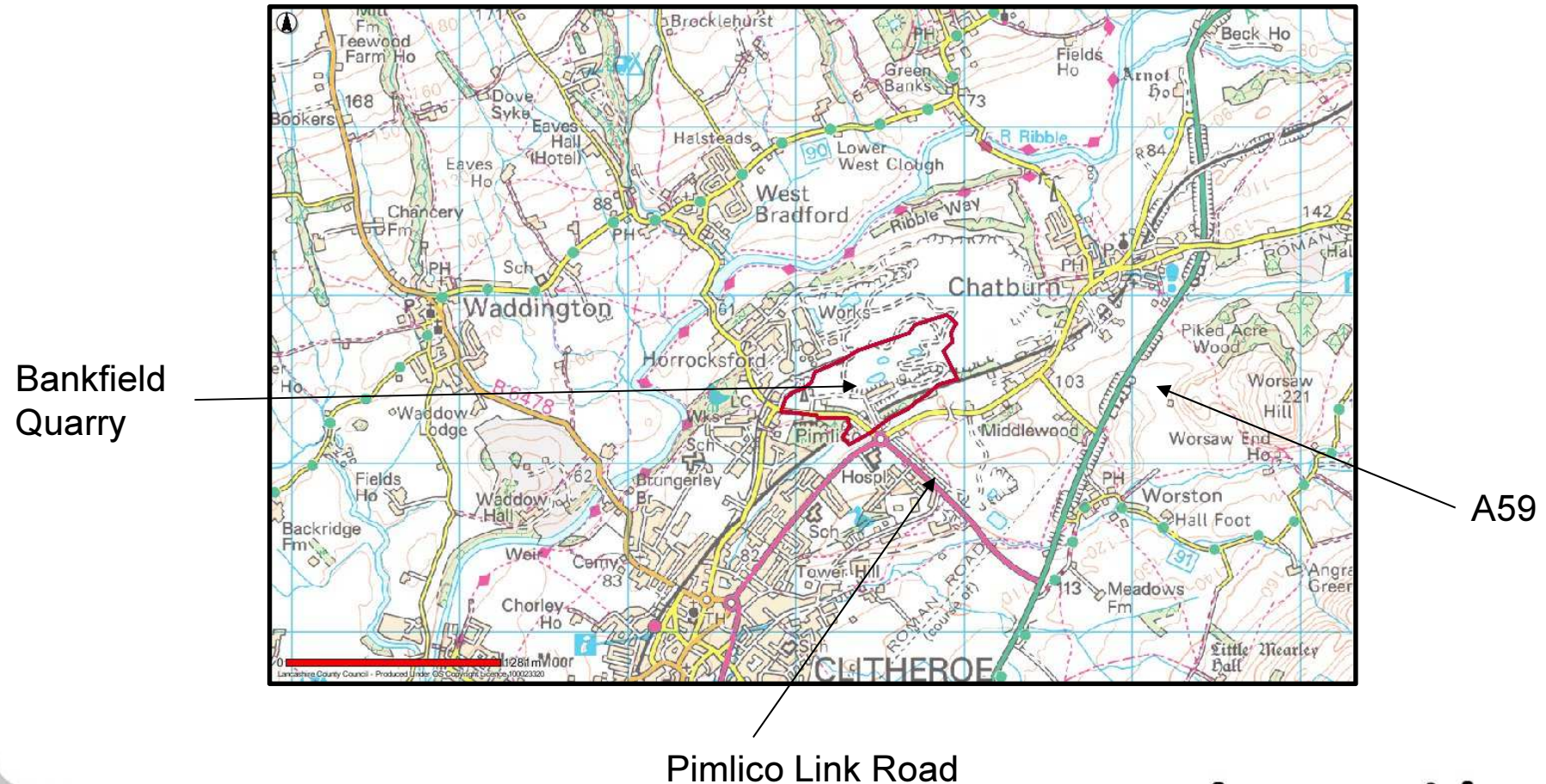


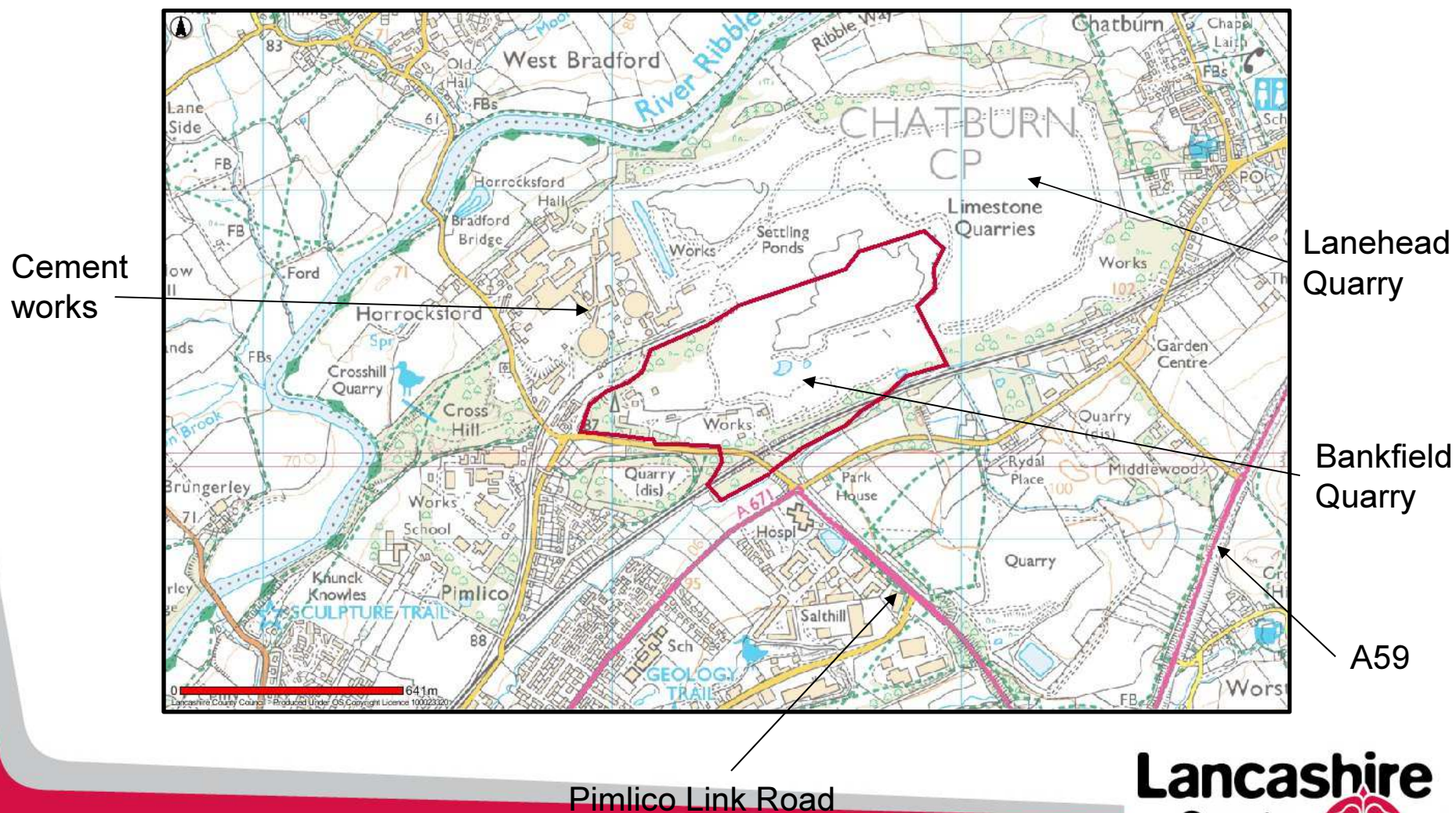
Planning Application LCC/2018/0060

**Continuation of mining operations until 31st
December 2033 with completion of restoration by
31st December 2035.
Bankfield Quarry, Pimlico Old Road, Clitheroe**

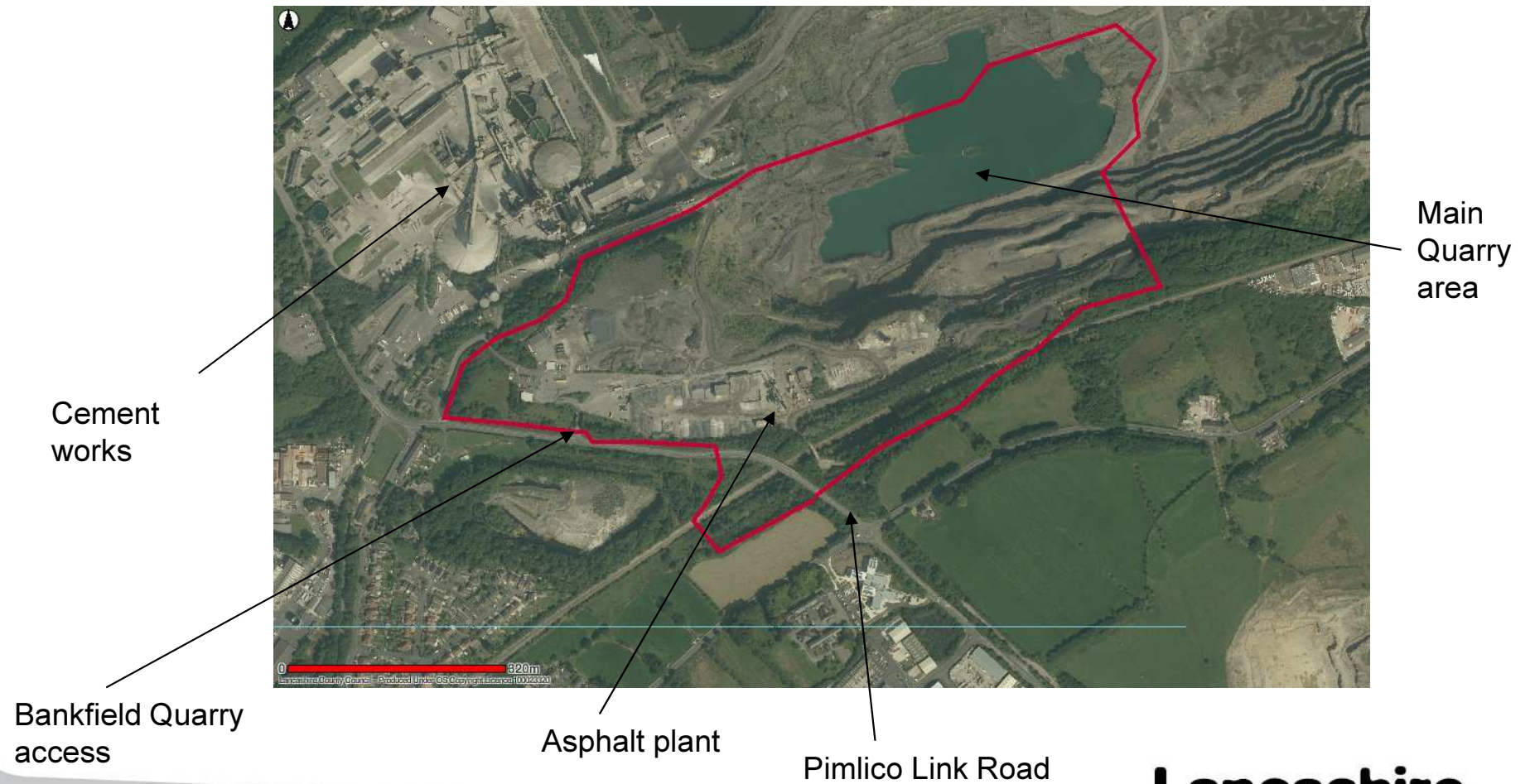
Planning application LCC/2018/0060



Planning application LCC/2018/0060



Planning application LCC/2018/0060



Planning application LCC/2018/0060 – view looking south west

Clitheroe

Bankfield
Quarry



Cement
works

Lanehead
Quarry



Planning application LCC/2018/0060 – View across quarry looking east

Lanehead
Quarry



Bankfield
Quarry



Planning application LCC/2018/0060 – quarry access off Pimlico Link Road



View along Pimlico Link Road



View towards asphalt plant

Landscaped
screen
mounds



Asphalt
Plant (behind
Screening)



Bankfield Quarry – Outfall to Chatburn Brook



Location
of outfall

