



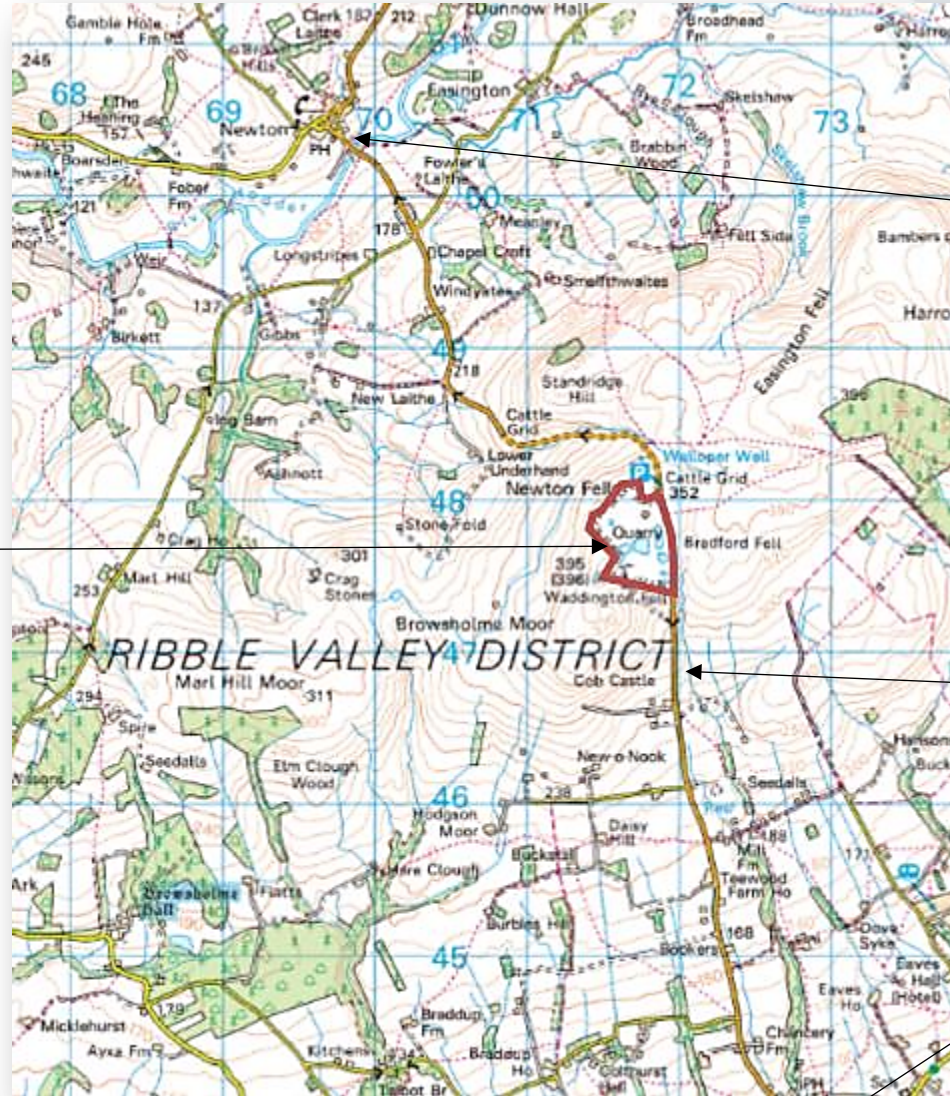
**Ribble Valley Borough: application number LCC/2022/0057**

**Variation of condition 2 of planning permission 03/06/0095 to allow mineral working to continue until 31 December 2023 and final restoration to be completed by 31 December 2024 at Waddington Fell Quarry, Slaidburn Road, Waddington**

# LCC/2022/0057

## Site Location

Waddington Fell  
Quarry



Newton

Slaidburn Road

Waddington



LCC/2022/0057  
Aerial view (2020)

Waddington Fell Quarry



LCC/2022/0057  
Aerial view (2020)





LCC/2022/0057

# Remaining mineral reserves

Quarry faces



Site entrance



Remaining area  
of permitted  
stone reserves



Silt  
lagoons

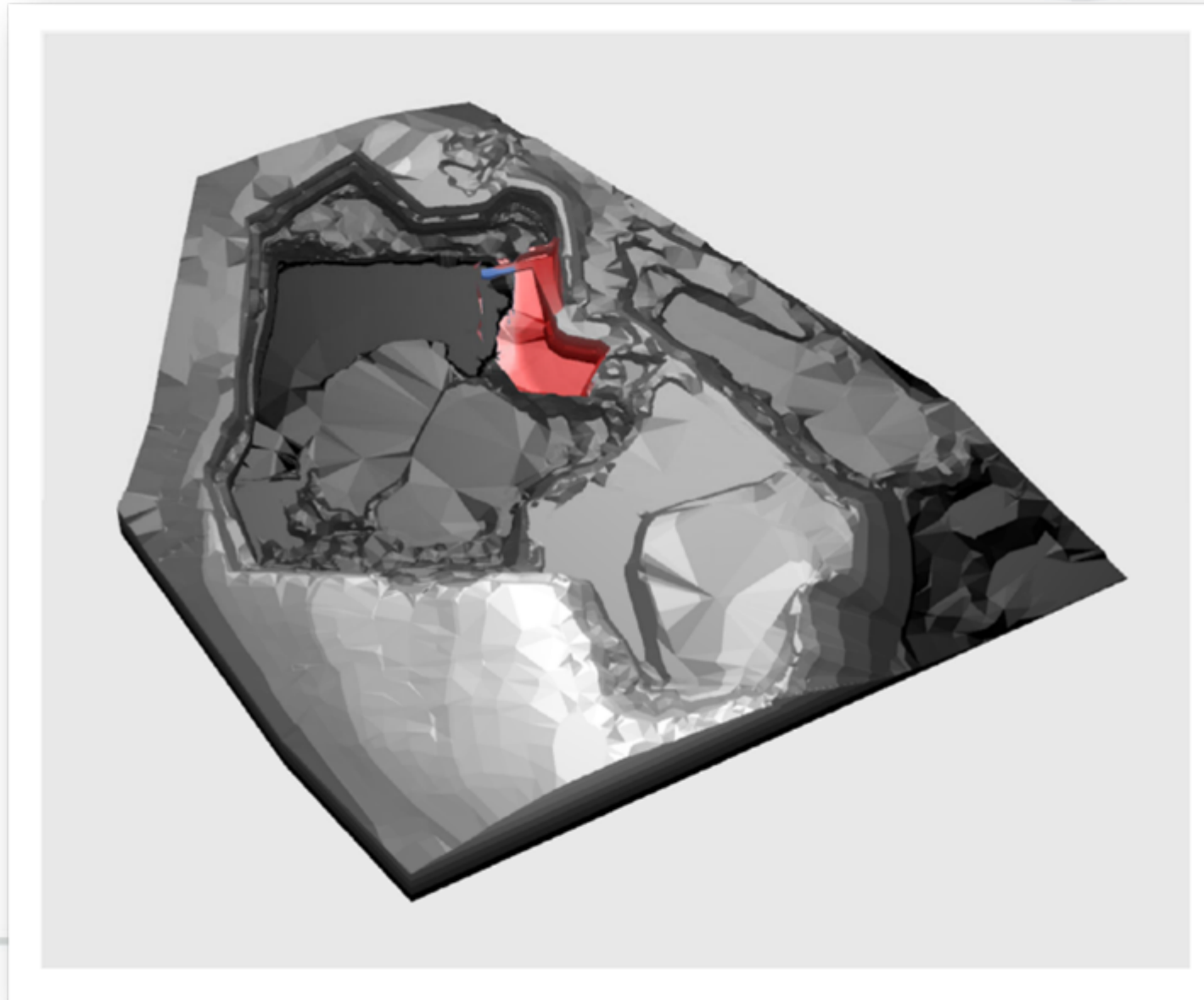


Restored area



LCC/2022/0057

# Remaining mineral reserves



LCC/2022/0057

Photo





LCC/2022/0057

Photo



# LCC/2022/0057

## Photo



Site entrance

LCC/2022/0057

Photo



Slaidburn Road heading down to  
Waddington

# LCC/2022/0057

## Photo



Waddington Village

LCC/2022/0057  
Photo



Waddington Village

LCC/2022/0057

Photo



Waddington Village

LCC/2022/0057  
Photo



Slaidburn Road at the top of Waddington  
Fell

LCC/2022/0057  
Photo



Slaidburn Road heading towards Newton



LCC/2022/0057  
Photo



Hallgate Hill rising up from Newton