

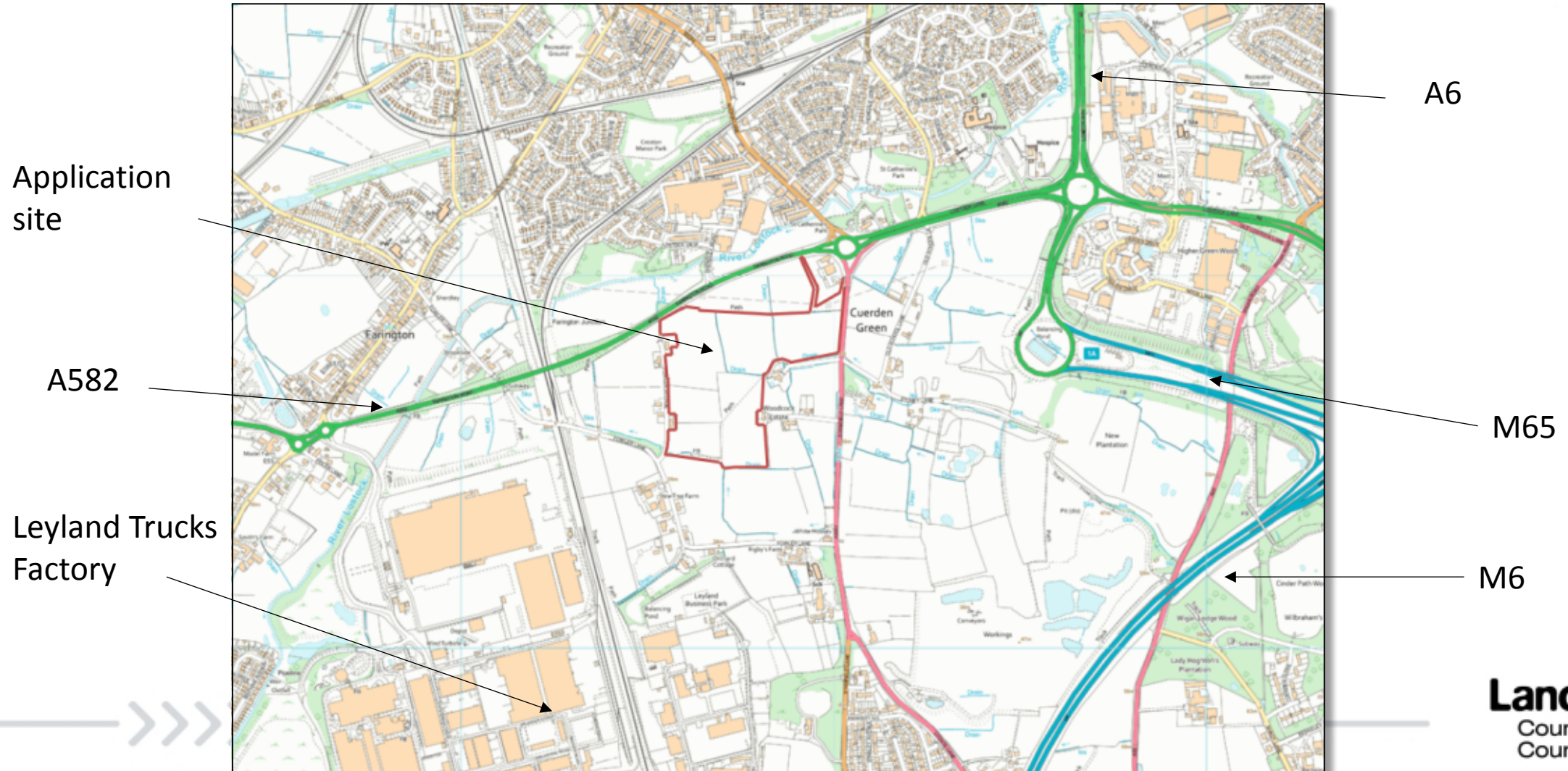
Planning Application LCC/2022/0048

Proposed cricket facility comprising 2no. Cricket ovals and associated pavilion building and spectator seating, cricket nets, access, parking, landscaping and associated works including temporary event overlay facilities.

Land at Woodcock Estate, Stanifield Lane, Farington

Planning application LCC/2022/0048

Site Location Plan



Planning application LCC/2022/0048

Detailed location

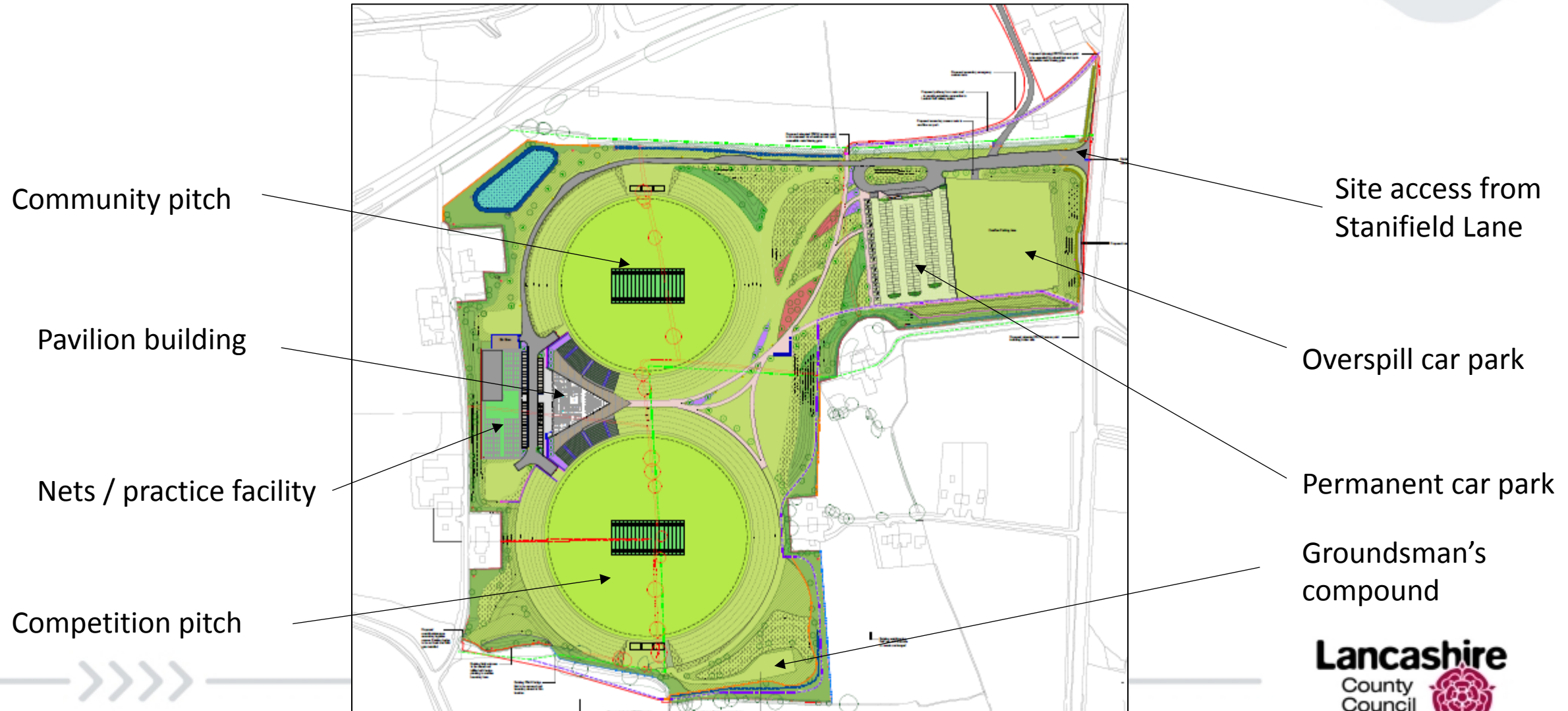


Planning application LCC/2022/0048

Air photograph



Planning application LCC/2022/0048- General Layout



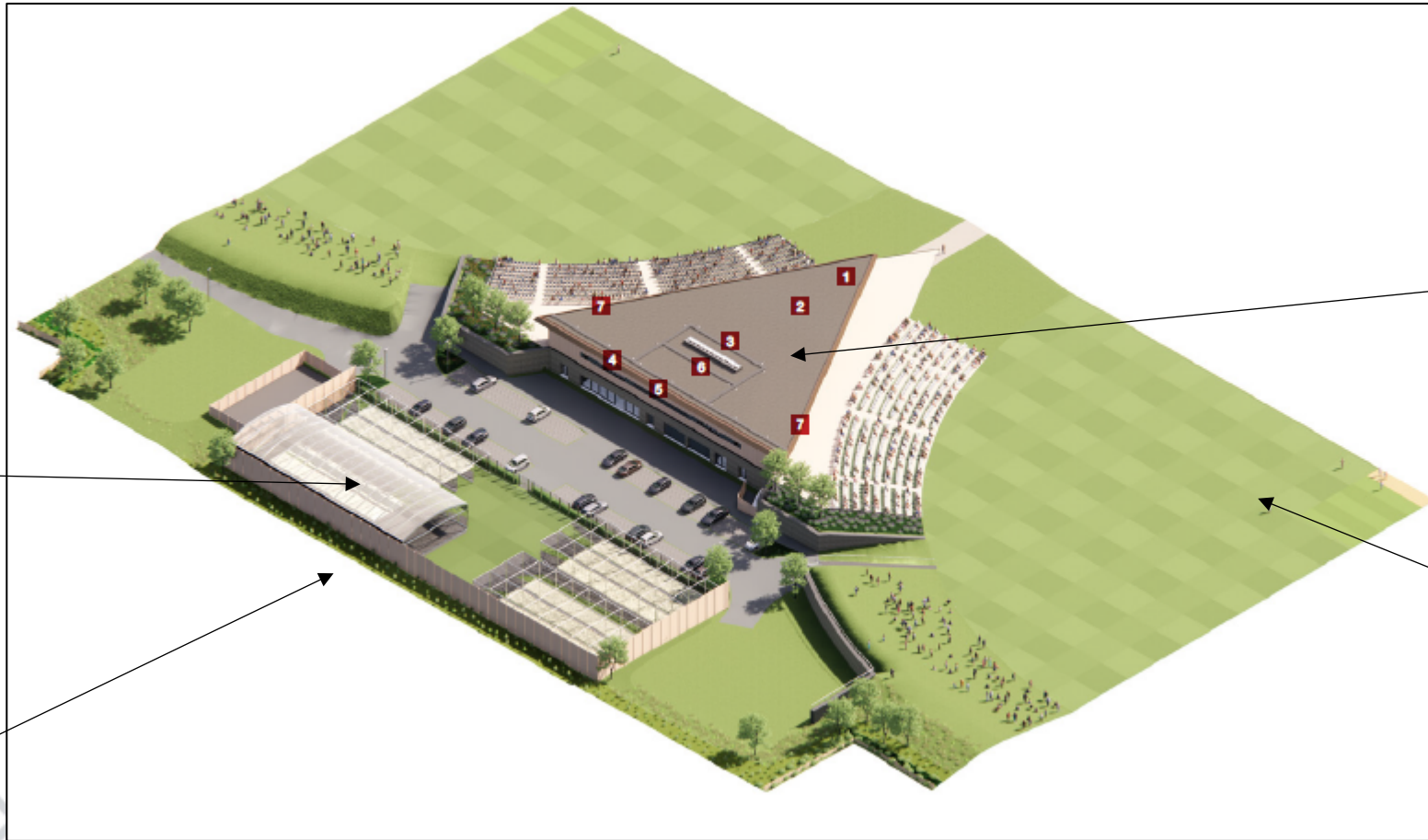
Planning application LCC/2021/0048 – View of site looking south



Planning application LCC/2022/0048 – View of site looking south with development



Planning application LCC/2022/0048 – View of pavilion building, car park and nets facility



Nets area

Location of
Fowler
Avenue

Pavilion building

Concrete terrace for
spectators

Cricket oval