



Planning Application LCC/2022/0039

Erection of temporary inert waste processing and washing plant with a concrete base and export of recycled materials off-site at Lydiate Quarry Lydiate Lane, Farington, Lancashire

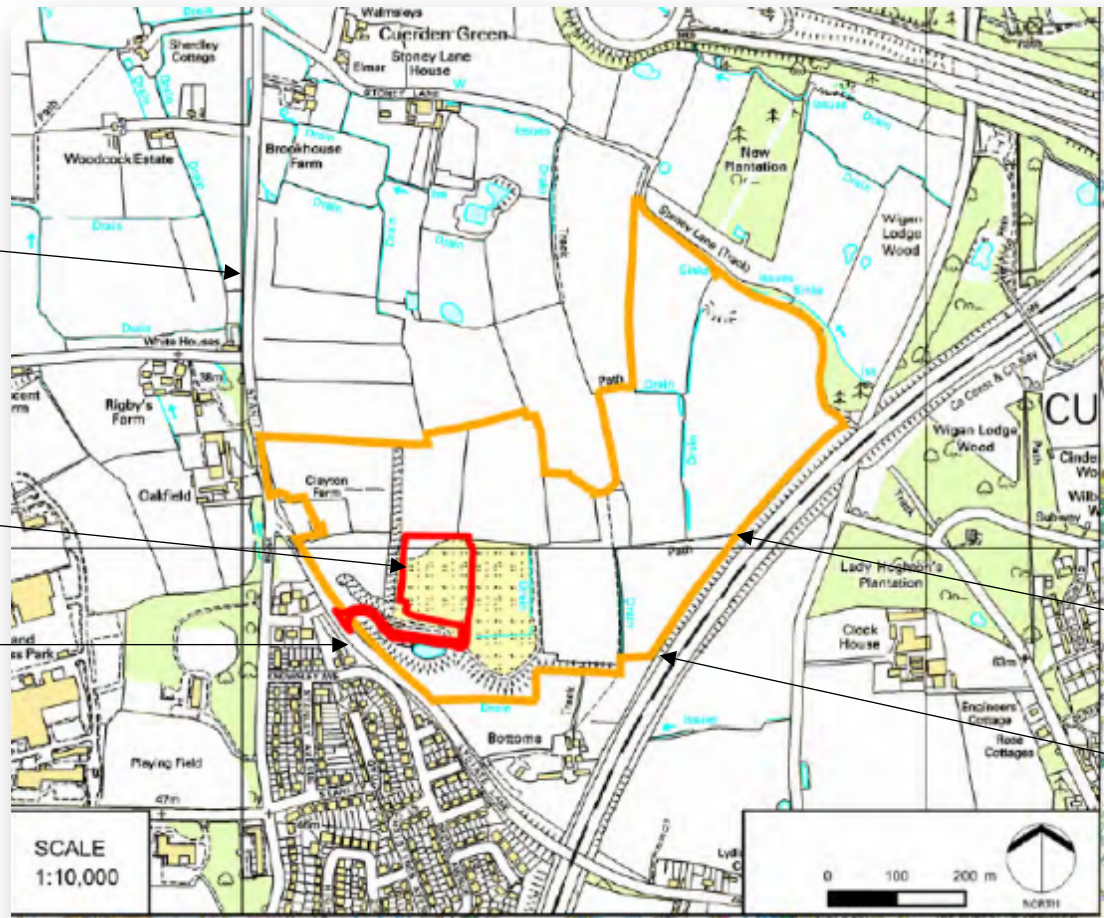
LCC/2022/0039

Site Location

Stanifield Lane

Application boundary

Lydiate Lane



LYDIATE LANE QUARRY

FIGURE 1
Site Location Plan

- KEY**
- Proposed Recycling Washing Plant Application boundary
 - Current Planning Permission Boundary Ref. LCC/2016/0035

Quarry boundary

M6 motorway

Planning, Landscape
an RSK company

LCC/2022/0039

Aerial view (2020)

Existing sand processing and washing plant and storage areas

Residential property

Location for processing and washing plant

Residential properties



Quarry working

Restoration working

M6 motorway



LCC/2022/0039

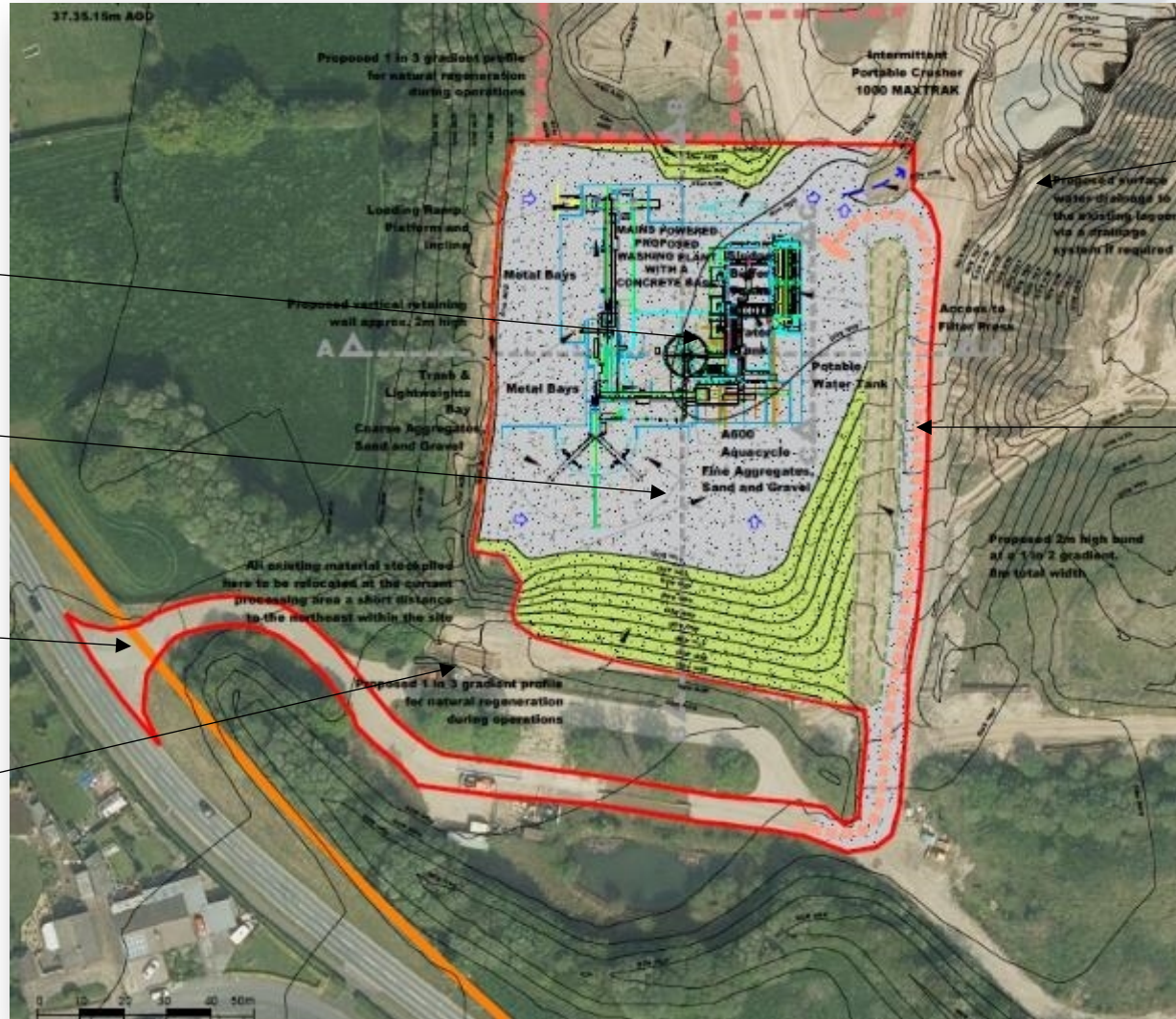
Site Layout

Processing and wash plant

Concrete pad

Existing access

Office, wheel cleaning and weighbridge

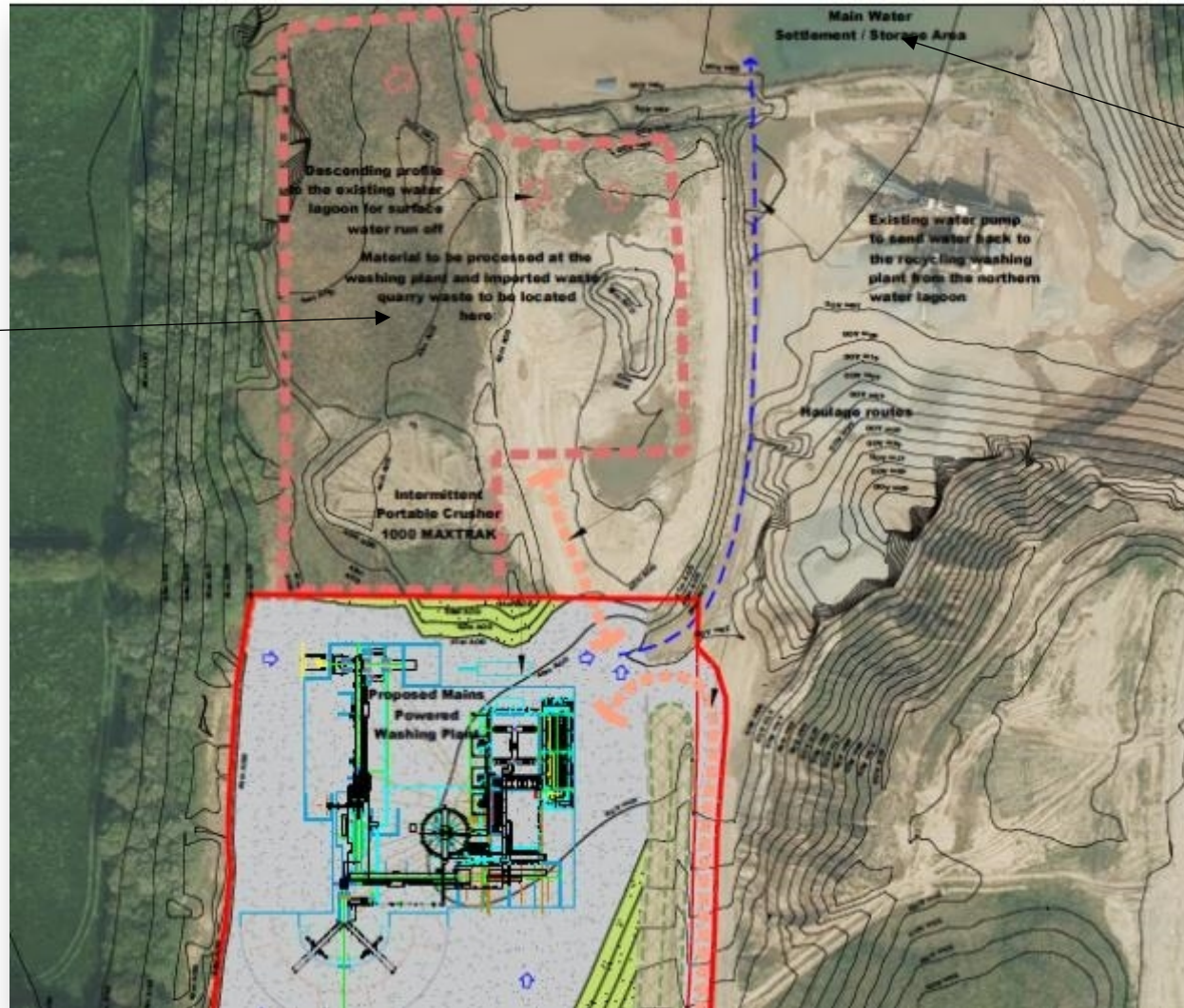


Quarry

Proposed new concrete access track

LCC/2022/0039 Stockpile and Drainage arrangements

Waste storage

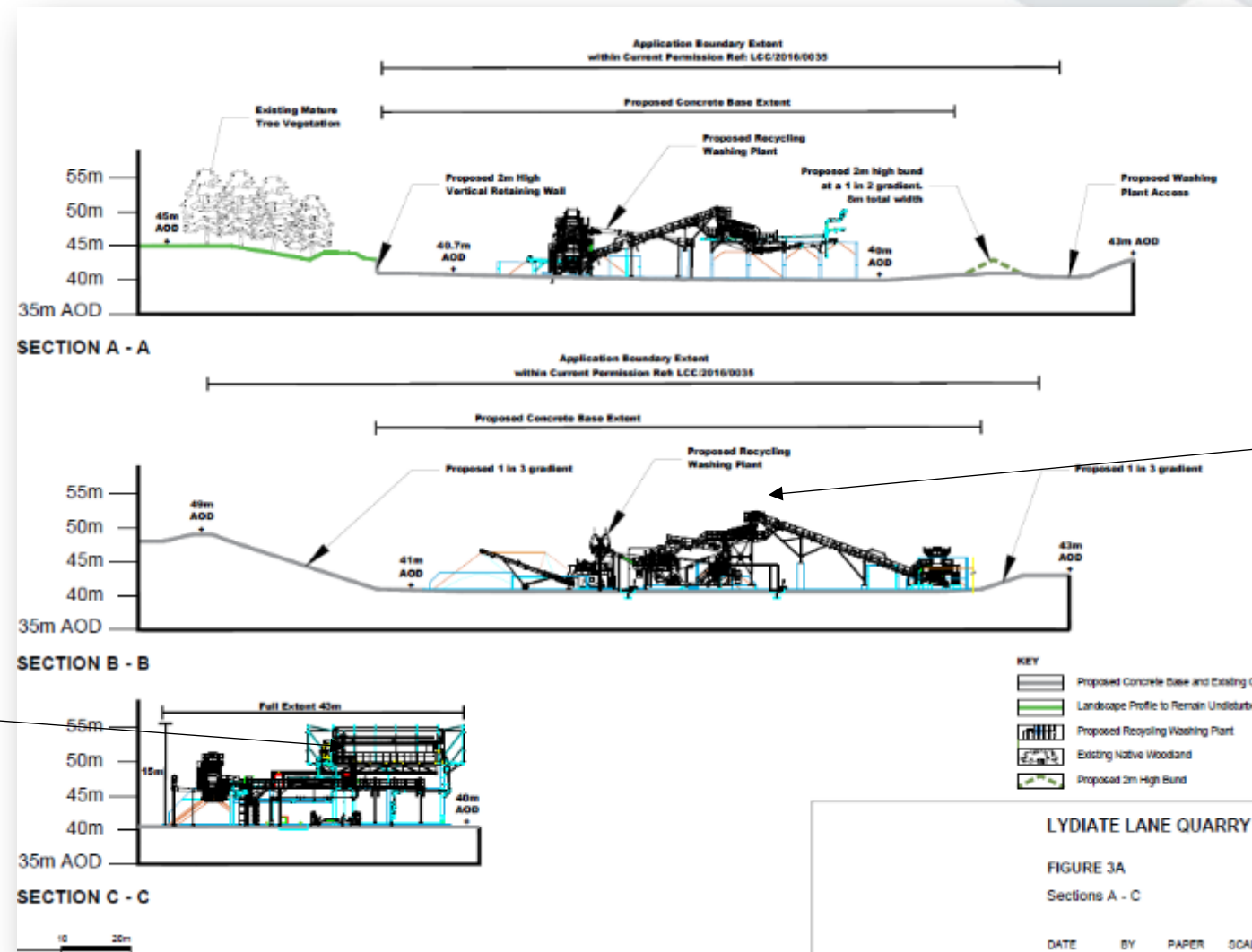


Settlement and
storage lagoons



LCC/2022/0039

Cross Sections



Conveyor

Filter press



LCC/2022/0039

Computer generated image



LCC/2022/0039

Computer generated image



LCC/2022/0039 photos



Site entrance at Lydiate Lane

LCC/2022/0039
photos



Lydiate Lane with properties on Bristol Avenue

LCC/2022/0039
photos



Site access towards office, weighbridge and wheel bath



LCC/2022/0039 photos



Existing sand and aggregate processing and stockpiles

Internal access to application site



LCC/2022/0039
photos



Application site with existing sand storage

