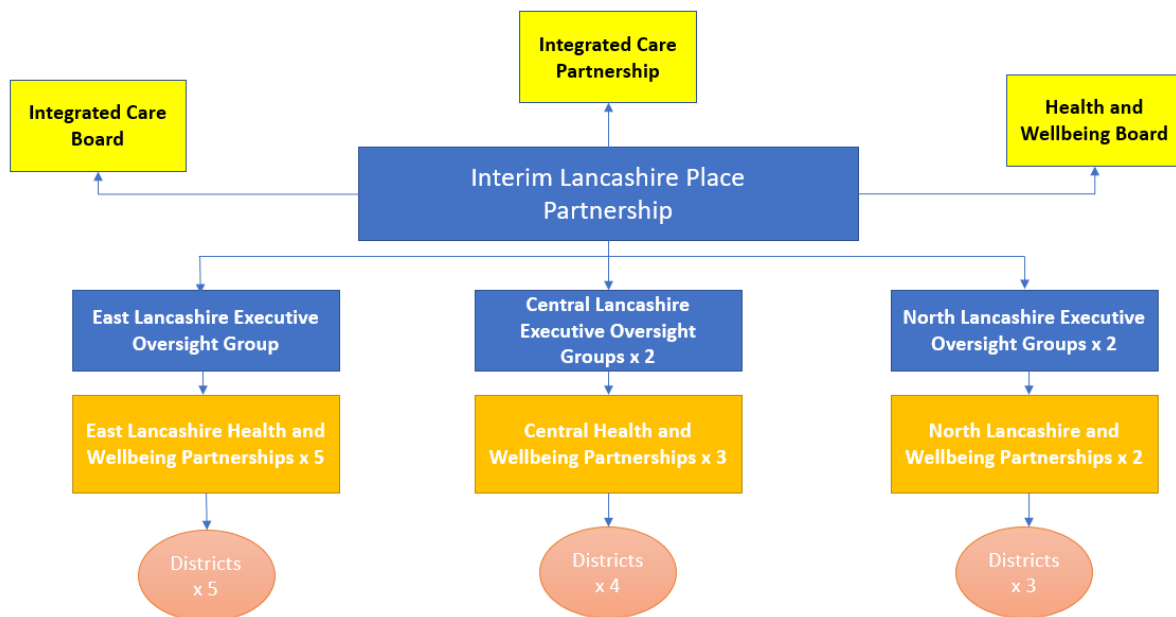


Appendix B – Current Governance Arrangements



An interim Lancashire Place Partnership has been established which currently reports into the Lancashire Health & Wellbeing Board. It creates a further opportunity to strengthen collaborative working and integration across Lancashire for the benefit of the public and communities and is focussed on delivering services and support that tackles avoidable health issues and inequalities plus enabling independence in the community.

The interim Lancashire Place Partnership has an independent Chair and will oversee the development of an options appraisal to determine the longer-term joint arrangements between the Lancashire Health and Wellbeing Board and the formal Lancashire Place Partnership Board which are necessary to receiving delegated authority for NHS budgets, resource and performance. It will act as a ‘place-based partnership’ until any new arrangements are established and has responsibility for agreeing a collective vision, ways of working, priorities and associated delivery plans.

Membership includes the chair of the Lancashire Health and Wellbeing Board; Director of Health and Care Integration for Lancashire (and Integrated Place Leaders); the ICB Chief of Health and Care Integration; a representative from the Provider Collaborative*; and Chief Executive level representatives from District Councils; Hospices; Voluntary, Community, Faith and Social Enterprise Sector; Healthwatch; Social Care Providers and a Clinical and Care Professional representative. As the formal arrangements for the Lancashire Place Partnership Board are agreed and implemented during 2023/24, this will require a review of membership

**The Provider Collaborative is a partnership that brings together the five NHS provider trusts in Lancashire and South Cumbria to improve health and healthcare. The collaborative is about working together as equal partners to make sure*

patients, their families, and communities benefit across the whole of the area.

Locality Chief Executive and System Leader Involvement

Within each locality area (Central, East and North Lancashire), Chief Executives and Senior Leaders are coming together on a regular basis (Executive Oversight Groups) to further build relationships, trust, share opportunities and accelerate place delivery.

Locality Health and Wellbeing Partnerships

Health and Wellbeing Partnerships are also being used as a mechanism for driving engagement and collaborative working between partners at a local level. They also provide a forum to discuss the strategic and operational co-ordination in the delivery of services. In this forum, the political, clinical, professional and community leaders from across our health and care system will come together to deliver the strategic direction set by the Health and Wellbeing Board and Integrated care Partnership in addition the development and delivery of our agreed local priorities to improve the health and wellbeing of our local populations and reduce health inequalities. They are often at district or multi-district level.