



NHS

NHS Cheshire and Merseyside
NHS Lancashire and South Cumbria
Mersey and West Lancashire Teaching Hospitals NHS Trust



Shaping Care Together

Lancashire Health and Adult Services Scrutiny Committee

Rob Cooper, Managing Director, MWL
SRO Shaping Care Together Programme

Contents

 Shaping Care Together: programme background

 Urgent and Emergency Care phase

 Case for change – the core elements

 Case for change - our approach

 Engagement

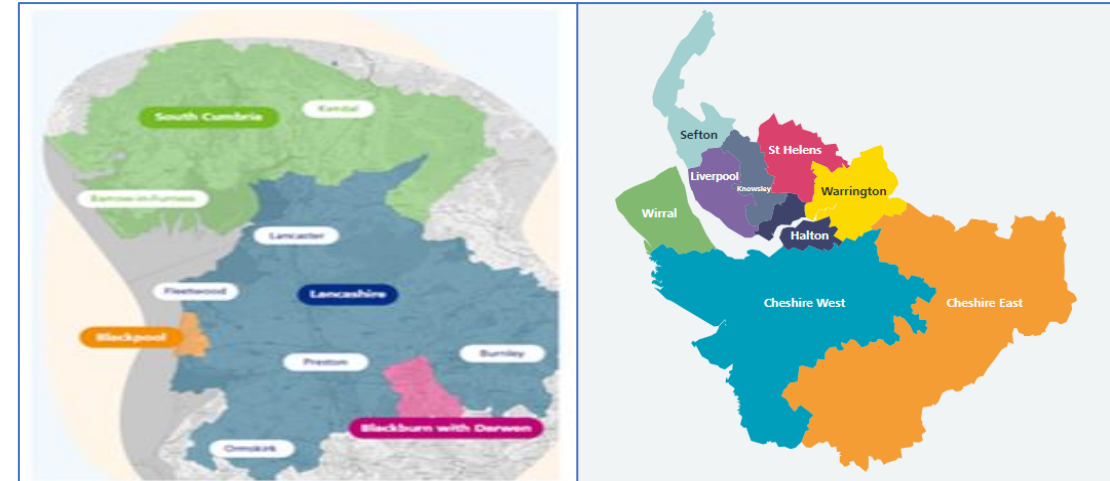
 Public Launch

 Programme Timeline

 Ask of OSC

Programme Background

- Shaping Care Together (SCT) covers the areas Southport, Formby and West Lancashire
- Southport and Ormskirk Hospital sites
- Programme sits across two ICBs (NHS Cheshire and Merseyside ICB and NHS Lancashire South Cumbria ICB)
- One Acute Trust (Mersey and West Lancashire NHS Teaching Hospitals)
- NHS Cheshire Mersey ICB Lead commissioner



Programme background

Public engagement to date

- Extensive public engagement 2021-22
- 2000+ survey responses
- Widespread engagement with public, community groups and the voluntary sector.
- Helped shape thinking around service change
- Underpins today's case for change
- Councillors and MPs

Urgent & emergency care phase

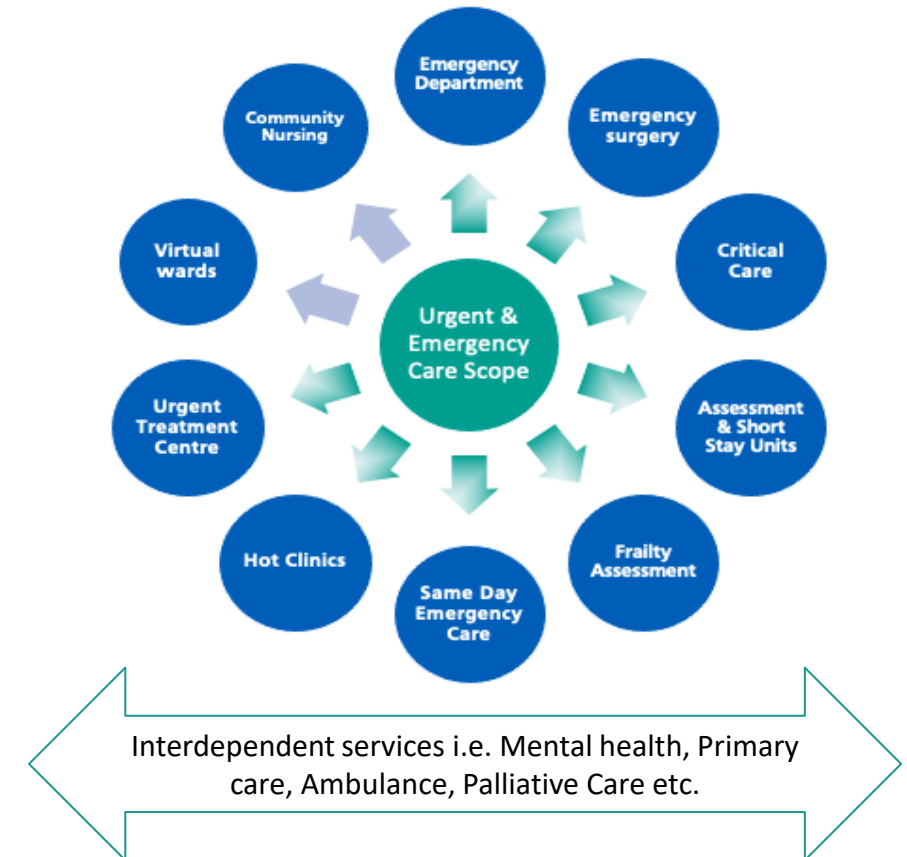
Why we are starting here

- Opportunity to access safer, high-quality services that are fit for the future
- Significant service co-dependencies
- Lacking 24/7 paediatric ED
- Workforce, quality and safety pressures
- Financial sustainability challenges
- An ageing population (more comorbidities).

Urgent & emergency care phase

What we are working towards

- Address immediate issues of current configuration through pathway & service change
- Make more efficient and effective use of available resources to provide better care and better value
- Ensure that resources are used in a way to help improve patient flow and safety
- Strategic alignment between place-based work and this programme to ensure cohesion



Planning and case for change

A case for change: NHSE guidance

What is a case for change?

The case for change comprehensively describes the reasons that you are seeking to make a service change, the current and future needs of the local population, the provision of local services and the key challenges facing the health and care system. It provides the platform for change and needs to present a compelling picture of what needs to change and why. It should also link to the benefits that the proposed service change will aim to deliver.

It provides the platform for change and needs to present a compelling picture of what needs to change and why. It should also link to the benefits that the proposed service change will aim to deliver.



The core elements

The core elements

What it is and what it is not

The case for change is there to objectively inform and enable participation....

... it DOES NOT seek to lead stakeholders towards a preferred option.

.....It's led by ICBs



Core messaging

- Delivering safe, excellent quality, sustainable services.
- Solutions that make best use of the funding, staffing, buildings, and other resources available today.
- Providing the same quality of care, to everyone, all the time.



What will be better?

Reduced waiting times at A&E and for urgent care

Less cancelled operations

Dedicated emergency care for everyone, all day, everyday

Better urgent care provided closer to home

An NHS that can meet your needs, today and in the future

Coproduction

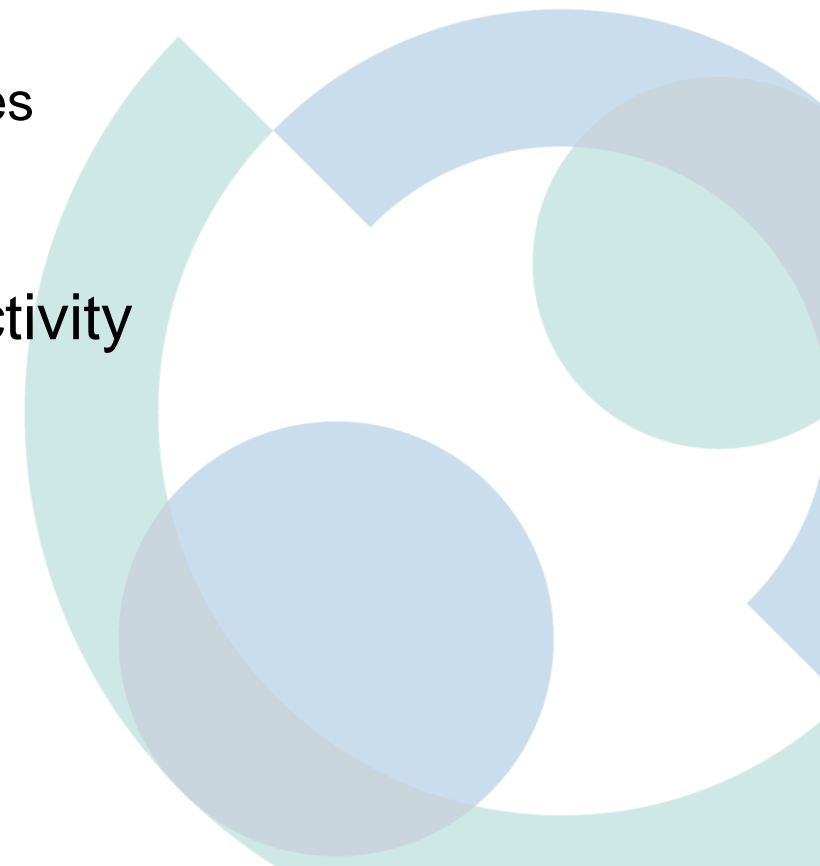


NHS Lancashire and South Cumbria
Mersey and West Lancashire Teaching Hospitals NHS Trust
NHS Cheshire and Merseyside

- Clinicians (Nursing, Consultants, GPs, Allied Health professionals)
- MWL, NWSAS, Mersey Care, HCRG Care Group, Primary Care
- C&M commissioners
- L&SC commissioners
- SCT Programme Board
- SCT workstream leads
- Healthwatch and CVS
- Patients, public, service users
- NHS England

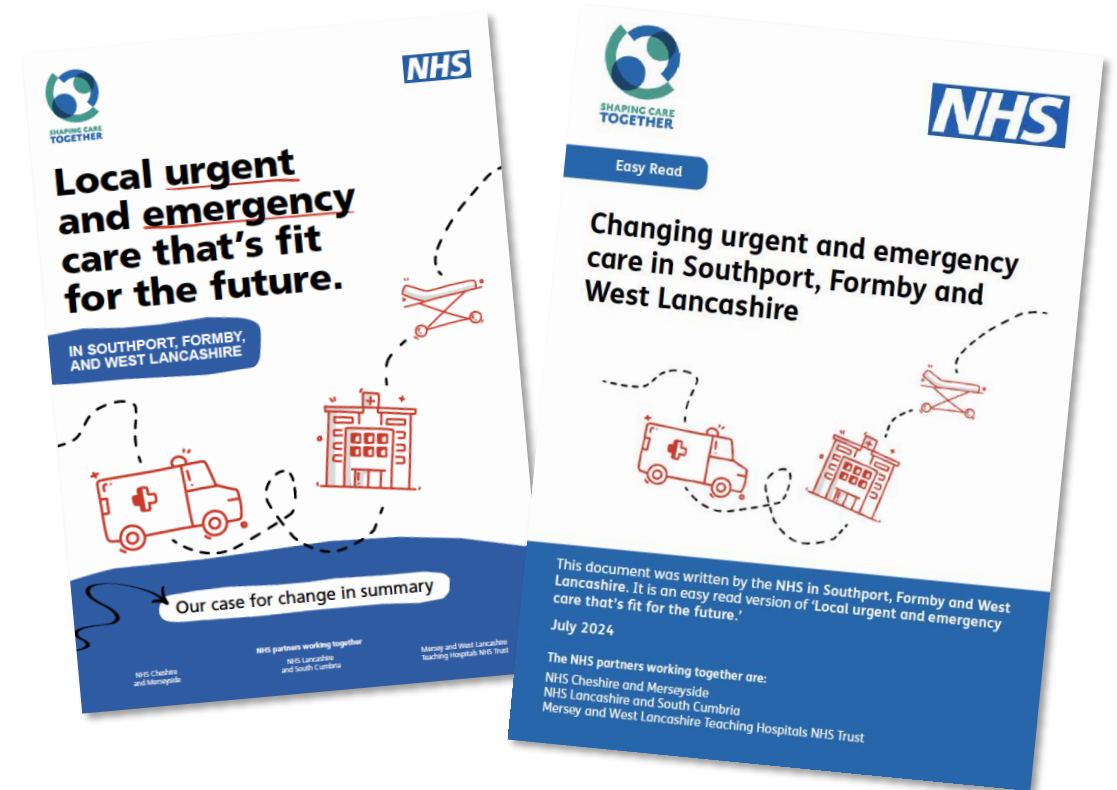
Stakeholder feedback for Case for Change

- Targeted stakeholder engagement in first half of May:
 - That we distil the content appropriately for different audiences
 - That we ensure maximum accessibility
- Feedback accounted for in pre-engagement phase activity



Public launch

- Case for change approved Thurs 26 July
- Publication and public launch followed along with **summary doc** and an **easy-read**
- Public **survey launched on refreshed website**
- **Newsletters** sent out to staff and stakeholders
- **Letters to MPs**
- **Media release** issued
- **Social media** marketing



Digital

The first four days after launch

- 1466 website visits
- 408 survey completions
- 17% of site visitors (247) downloaded the summary CfC
- 6% (88) downloaded the full version.
- Social media – 8,244 reach / 476 click throughs



High level programme timeline

Communications & engagement phasing					
1	2	3	4	5	6
Targeted pre-publication engagement	Tripartite board review for Case for Change	Stakeholder engagement	Options appraisal	Final reporting	PCBC
May	July	2 months	1 month	1 month	

Ask of HOSC

- As this programme sits across 2 HOSCs a reminder that a Joint HOSC needs to be set up for substantial variation in health services affecting more than one local authority area

