

England Biodiversity Strategy



Lancashire,
Manchester &
N Merseyside

Designed to fulfil our Global and European commitments to the Convention on Biological Diversity

Enshrined within NERC Act duty

Biodiversity 2020:
A strategy for England's wildlife
and ecosystem services



Why a new strategy?



Lancashire,
Manchester &
N Merseyside

- Failure to meet 2010 targets to halt the loss of biodiversity – new 2020 targets set at Nagoya Biodiversity Summit
October 2010
- Review of this failure suggest that the English nature conservation approach too piecemeal – integration needed and landscape scale.
- Greater understanding of the value of nature and the services it provides.
- Climate and population change will increase pressures on wildlife.



National Ecosystem Assessment Study

June 2011



Lancashire,
Manchester &
N Merseyside

‘The natural world, its biodiversity and its constituent ecosystems are critically important to our well-being and economic prosperity, but are consistently undervalued in conventional economic analyses and decision making.’

For example, the report calculated:

- the value of pollinators to UK agriculture of £430m p.a.
- UK green spaces worth at least £30bn a year in health and welfare
- Flood control and storm buffering value of our wetland habitats is worth £366m a year



'Making space for nature': a review of England's wildlife sites. Chaired by Sir John Lawton September 2010



Lancashire,
Manchester &
N Merseyside

Terms of reference :

- Examine evidence on the extent to which England's collection of wildlife sites represents a coherent and resilient ecological network capable of adapting to the challenge of climate change and other pressures (looked at 2°C temp. rise)
- Examine the evidence base to assess whether a more inter-connected network would be more effective today and in the future and, if so, how this could be delivered
- Taking account of the ecological, economic and social costs and benefits, make costed and prioritised recommendations



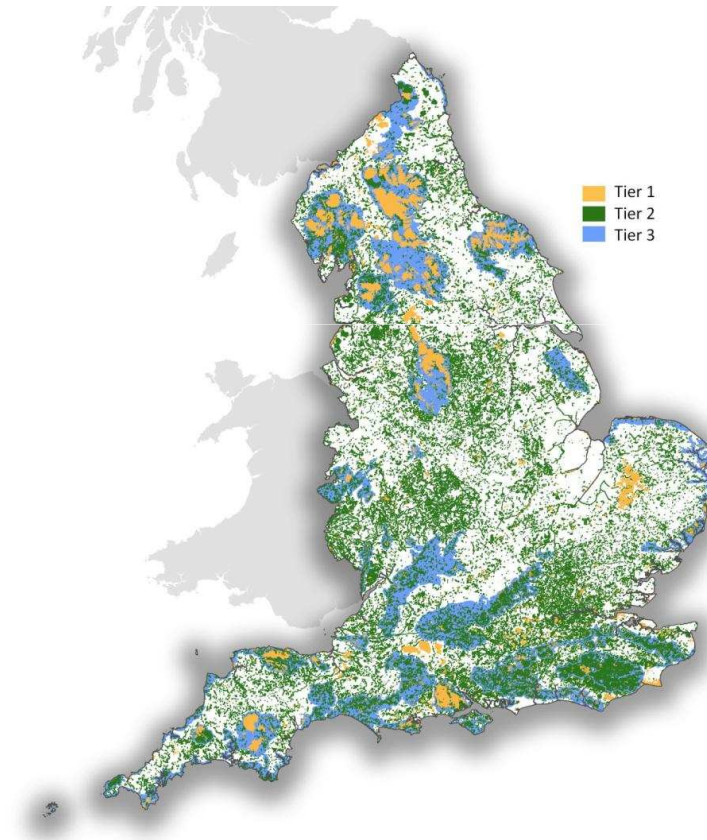


Lancashire,
Manchester &
N Merseyside

The Lawton Review called for a step change in the way nature conservation is delivered.

Our wildlife resource is fragmented and conservation efforts piecemeal

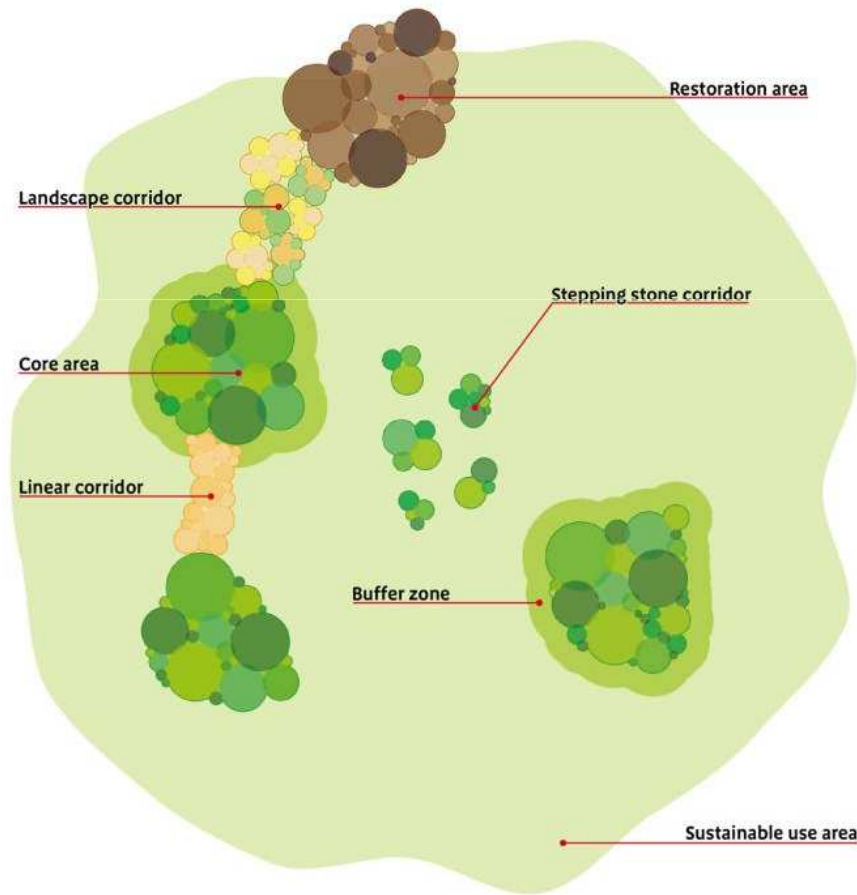
Sets out principles to guide adaptation to climate change



A more robust landscape



Lancashire,
Manchester &
N Merseyside



'Making Space for Nature' September 2010

Natural Environment White Paper

June 2011



Lancashire,
Manchester &
N Merseyside

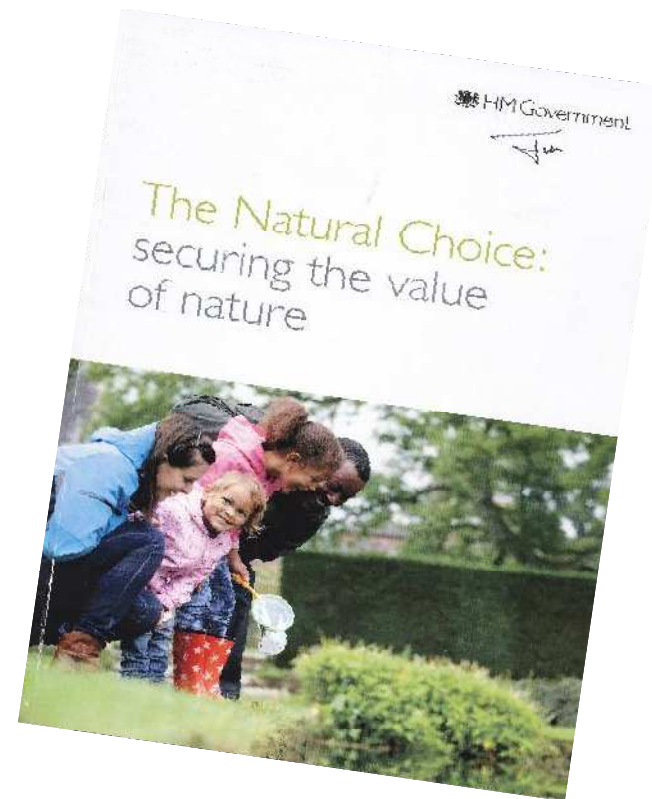
‘Nature is sometimes taken for granted and undervalued. But people cannot flourish without the benefits and services our natural environment provides. A healthy, properly functioning natural environment is the foundation of sustained economic growth, prospering communities and personal wellbeing.’

Key proposals;

An **ecosystem services** approach at the heart of decision making

Landscape scale

Multi-partner and multi-thematic working



England Biodiversity Strategy

August 2011



Lancashire,
Manchester &
N Merseyside

The vision is....

to halt overall biodiversity loss, support healthy well-functioning ecosystems and establish coherent ecological networks, with more and better places for nature for the benefit of wildlife and people.

Biodiversity 2020:
A strategy for England's wildlife
and ecosystem services



England Biodiversity Strategy

August 2011



Lancashire,
Manchester &
N Merseyside

The 5 key elements of the new strategy are:

- a more integrated approach across all sectors
- large-scale approach to conservation on land and at sea
- putting people at the heart of biodiversity policy
- reducing environmental pressures
- improving our knowledge



Action plan to be published in the spring

The Strategy sees delivery being organised locally through Local Nature Partnerships (LNP)



Lancashire,
Manchester &
N Merseyside

- 50 LNPs nationally
- Lancashire was successful in applying for funding to help move towards LNP status
- “LNP to mirror Local Enterprise Partnerships (LEPs) and, Government explicitly “encourages LEPs and Local Nature Partnerships to work together to forge strong links that capture the value of nature.”
- Work to deliver landscape-scale action.



Nature Improvement Areas



Lancashire,
Manchester &
N Merseyside

A £7.5million competition for partnerships, primarily LNPs, to bid for funding to develop one of 12 initial Nature Improvement Areas (NIAs). They will be:

“large, discrete areas that will deliver a step change in nature conservation, where a local partnership has a shared vision for their natural environment.”

Three NIAs have been submitted in Lancashire: Morecambe Bay Partnership Area; Forest of Bowland; South Pennines

The way forward



Lancashire,
Manchester &
N Merseyside

The proposal is to develop a Local Nature Partnership for Lancashire and to work together to deliver the Biodiversity Strategy.

